



A Specialist Supplier in Access Systems...

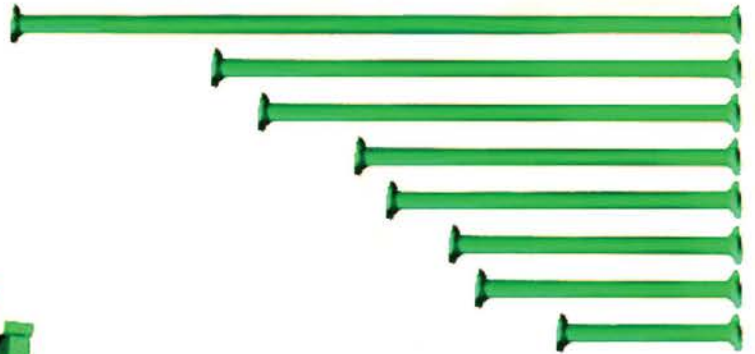
ACE CUPLOCK SCAFFOLD



Standard/Vertical
Size: 1.00 Mtr-3.00 Mtr



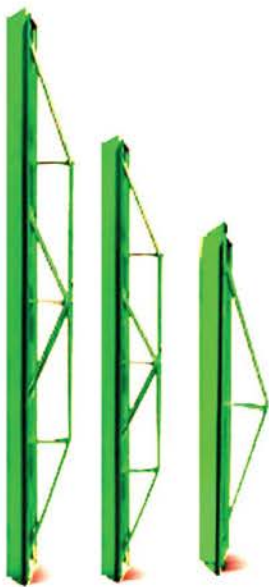
Infil Beam
Size: 0.50 Mtr-1.70 Mtr



Ledger/Horizontal
Size: 0.60 Mtr-2.50 Mtr



Mediate Transom
Size: 0.60 Mtr-2.50 Mtr

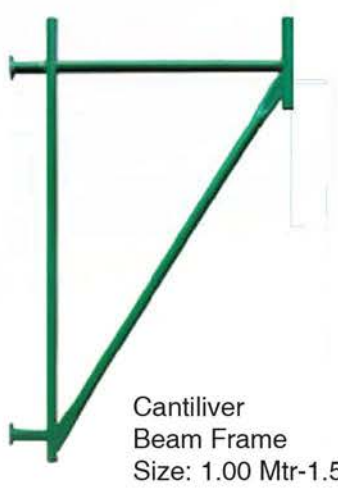


Decking Beam
Size: 0.50 Mtr-1.70 Mtr

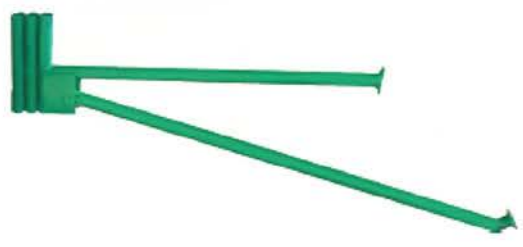


Innovative · High Quality · Safe · Reliable

ACE CUPLOCK SCAFFOLD



Cantiliver Beam Frame
Size: 1.00 Mtr-1.50 Mtr



Cantiliver Frame
Size: 1.00 Mtr-1.50 Mtr



Beam Bracket
Size: 1.00 Mtr-1.50 Mtr



Base Plate



Base Adaptor



Fixed Fork Head



Universal Jack



Base Jack



Adj. Fork Head



Drop Head



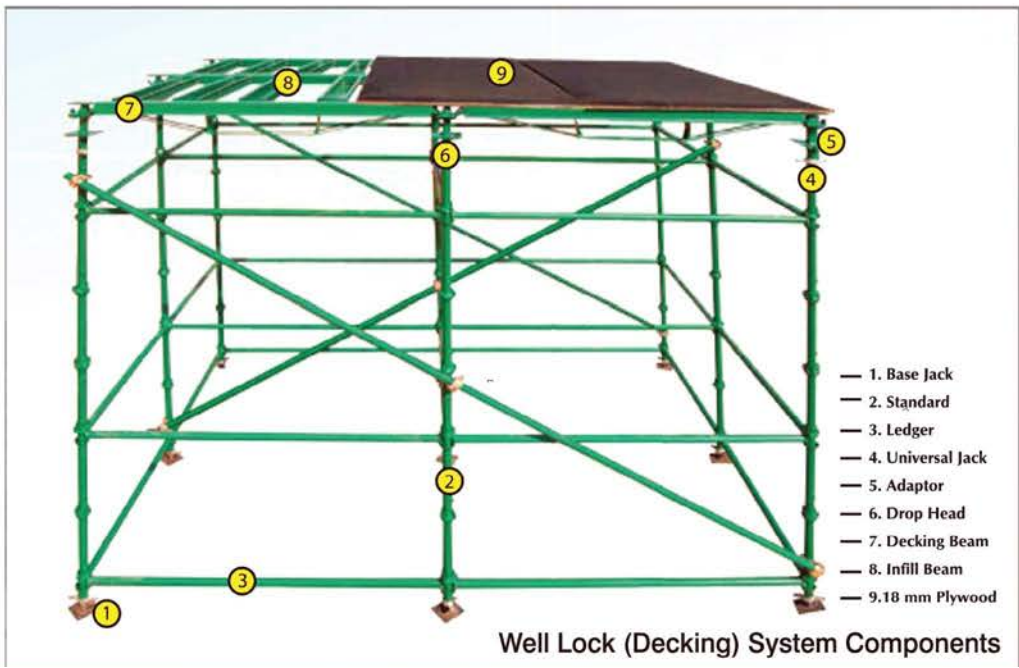
Conector



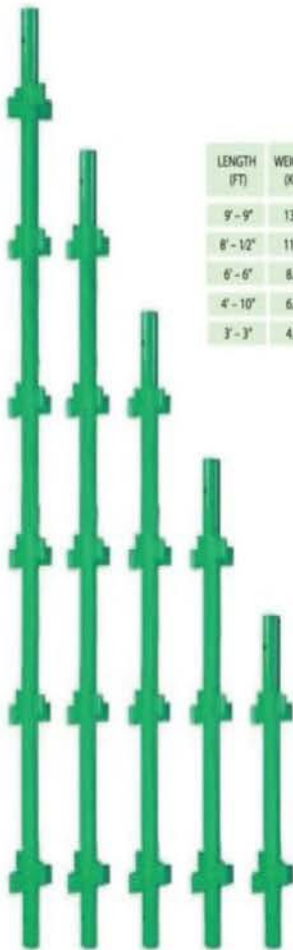
Swivel Coupler
Drop Forged



Fixed Coupler
Drop Forged



ACE K STAGE SCAFFOLD



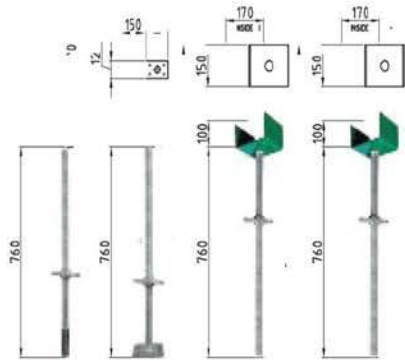
LENGTH (FT)	WEIGHT (KG)
9' - 9"	13.38
8' - 12"	11.19
6' - 6"	8.66
4' - 10"	6.64
3' - 3"	4.42



SPIGOT
Used to connect two standards
WEIGHT = 0.84KG



Support Standards



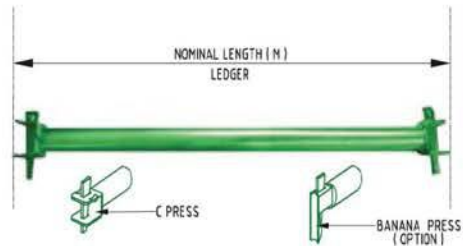
SPIGOTTED JACK
WEIGHT = 3.03KG
It connects open-end standards with drophead and is used for adjusting drophead height.

BASE JACK
WEIGHT = 3.88KG
It is the base of scaffolding and used to level standards on uneven grounds.

ADJUSTABLE FORKHEAD
WEIGHT = 5.43KG

UNIVERSAL JACK & FORKHEAD
WEIGHT = 6.55KG

Adjustable Jacks



Support Ledgers



Decking Beam



Infill Beam



Drop Head



A Specialist Supplier in Access Systems...

ACE PRO SYSTEMS



Super Heavy Duty Props
Size: 3.00 m - 6.00 m



Telescopic Steel Prop Jack HD
Size: 3.00 m - 6.00 m



Telescopic Steel Prop Jack MD
Size: 2.00 m - 4.00 m



Innovative · High Quality · Safe · Reliable



A Specialist Supplier in Access Systems...

ACE HANGING PLATFORM



Galvanised Pipes



Double Coupler



Swivel Coupler



BRC



Putlog Coupler



Sleeve Coupler



Beam Coupler



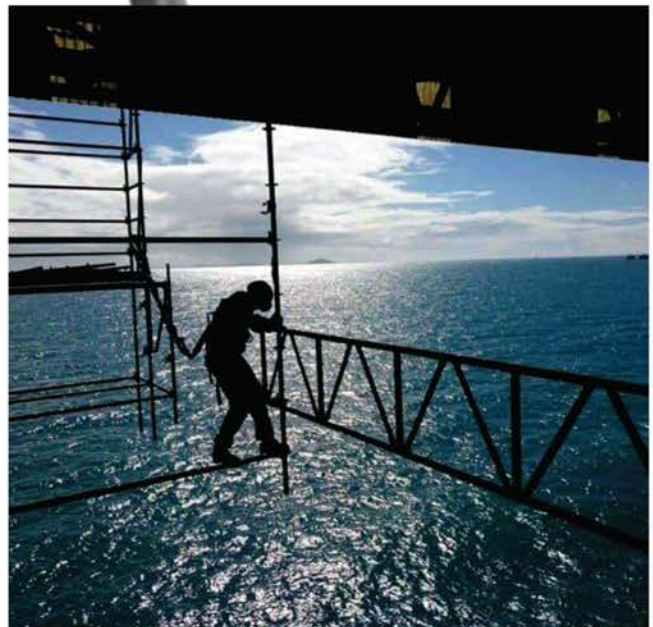
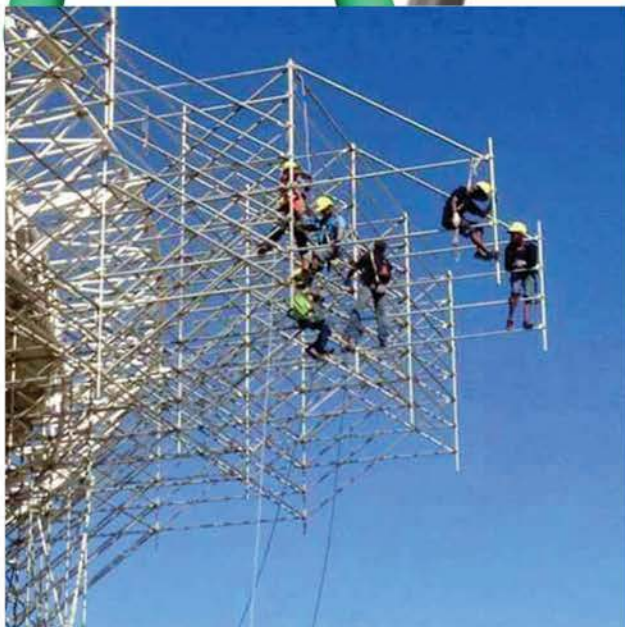
Austrian kilndried Wooden Boards
Size: 38.00mm thk x 22.00 mm



Beam Ladder
Size: 1.00 Mtr to 8.00 Mtr



Osha Wooden Planks
Size: 38.00mm thk x 225.00 m



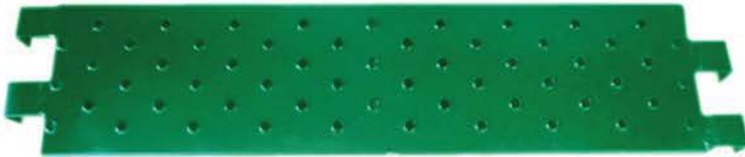
Innovative · High Quality · Safe · Reliable



Steel Planks
Size: 38.00mm x 225.00 mm x 1.00 mtr-4.00 mtr



American Steel Plank with Hook
Size: 60.00 mm x 225.00 mm x 1.00 mtr-3.00 mtr



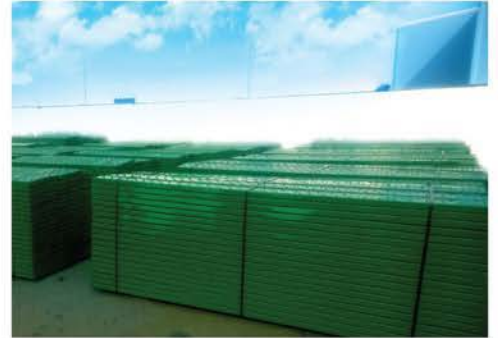
Steel Plank with Hook
Size: 60.00 mm x 225.00 mm x 1.00 mtr-3.00 mtr



Steel Plank with Hook
Size: 60.00mm x 225.00 mm x 1.00 mtr-2.50 mtr



Steel Plank with Hook
Size: 60.00 mm x 225.00 mm x 1.00 mtr-2.50 mtr





A Specialist Supplier in Access Systems...

ACCESSORIES



Swivel Coupler Drop Forged



Double Coupler Drop Forged



Swivel Coupler Pressed



Double Coupler Pressed



Drop Froged Putlog Coupler



Pressed Put lock Coupler



Board Retaining Coupler



Gravel Lock Gider Coupler



Sleev Coupler Pressed



Waller Clamp



Steel Waller Clamp K6



Universal Clamp



Rapid Clamp



Wing Nut



Timber Waller Clamp K6



Tie Rod



Plastic Sleeve



MS Tube 48.3 mm OD



Gi Tube 48.3 mm OD



Water Barrier



Tie Plate



Water Stopper



Shuttering Clamp



Plastic Cone



8" Caster
12lbs



8" Heavy Duty Caster
12.5lbs



Joint Pin



Parallel Coupler



Spigot Pin

Innovative · High Quality · Safe · Reliable